

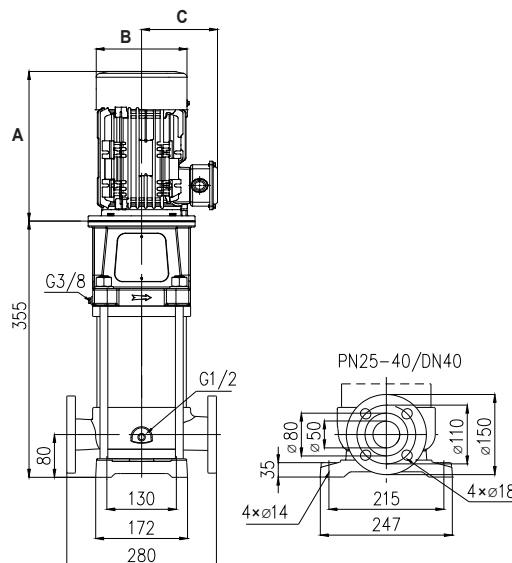
TECHNICAL DATA

RATED FLOW [M3/H]	10m3/hr
MAX FLOW	13m3/hr
MAX HEAD	22.1M
OPTIMUM OPERATING RANGE @ 50HZ	6.0m3/hr @ 17.3m 58.2% eff 12.5m3/hr @ 7.5m 39% eff
WORKING AIR TEMP	0°C - 40°C
LIQUID TEMPERATURE	-15°C - 120°C
HIGHEST EFFICIENCY	66.5%
MAXIMUM PUMP PRESSURE	34 bar
NET WEIGHT (KG)	34.5kg

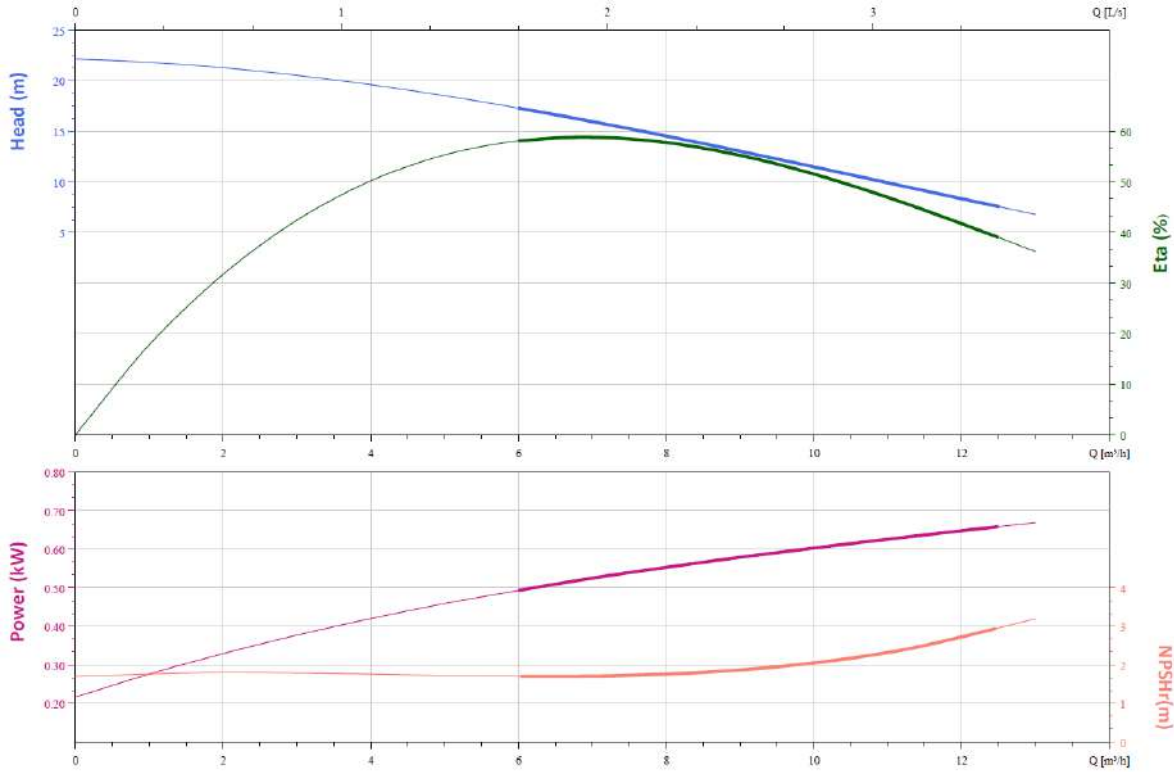
RATED VOLTAGE/CURRENT	3~ 230V +10% - 6% 2.94A 3~ 415V +10% - 6% 1.68A
POWER (KW)	0.75kW 2 pole
MOTOR IP RATING	IP55
MOTOR INSULATION	Class F
MOTOR EFFICIENCY STD	I.E.3
MOTOR EFFICIENCY	80.7%
COS Ø	0.82
MECHANICAL SEAL	AS-L-12
OUTLET DIN FLANGE	DN40

DIMENSIONS

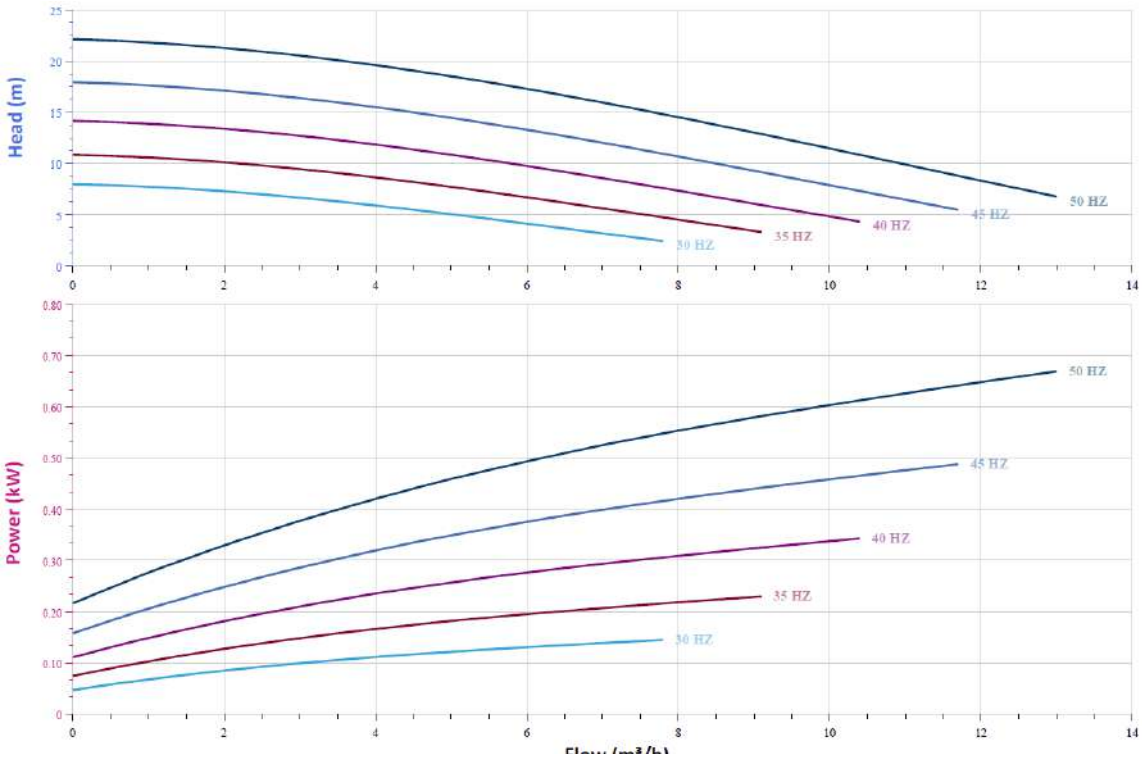
HEIGHT A	271
DIAMETER B	154
RADIUS C	124



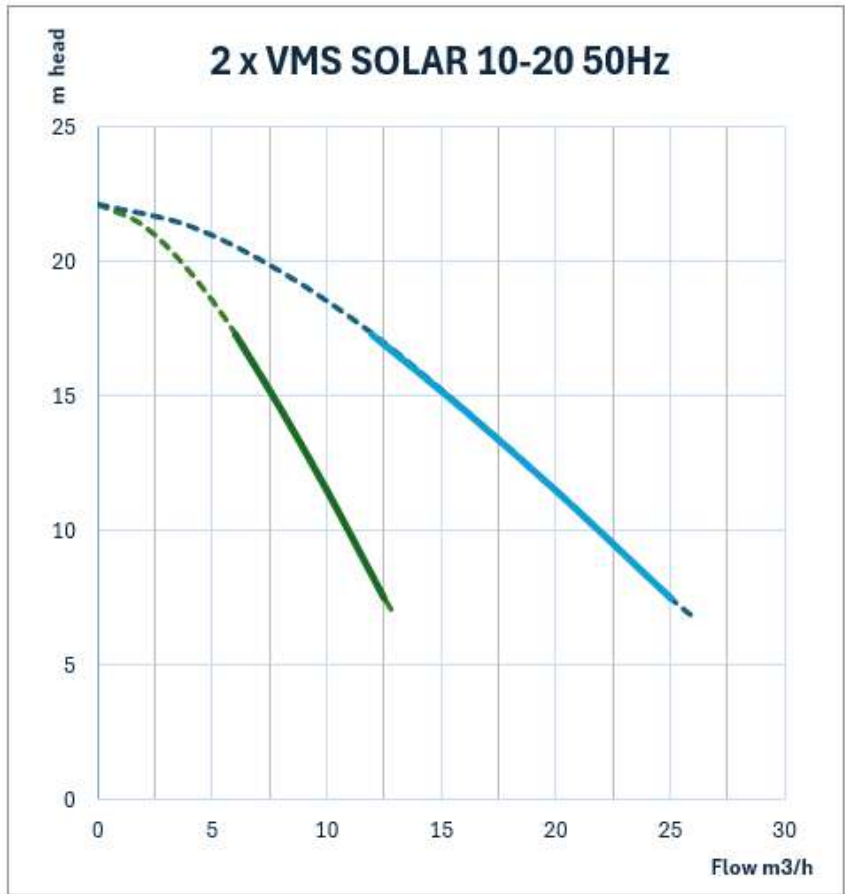
CURVE



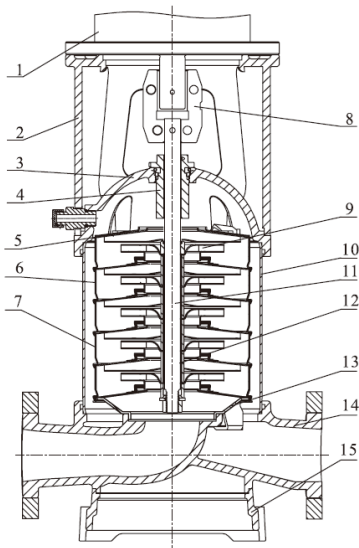
VFD CURVE



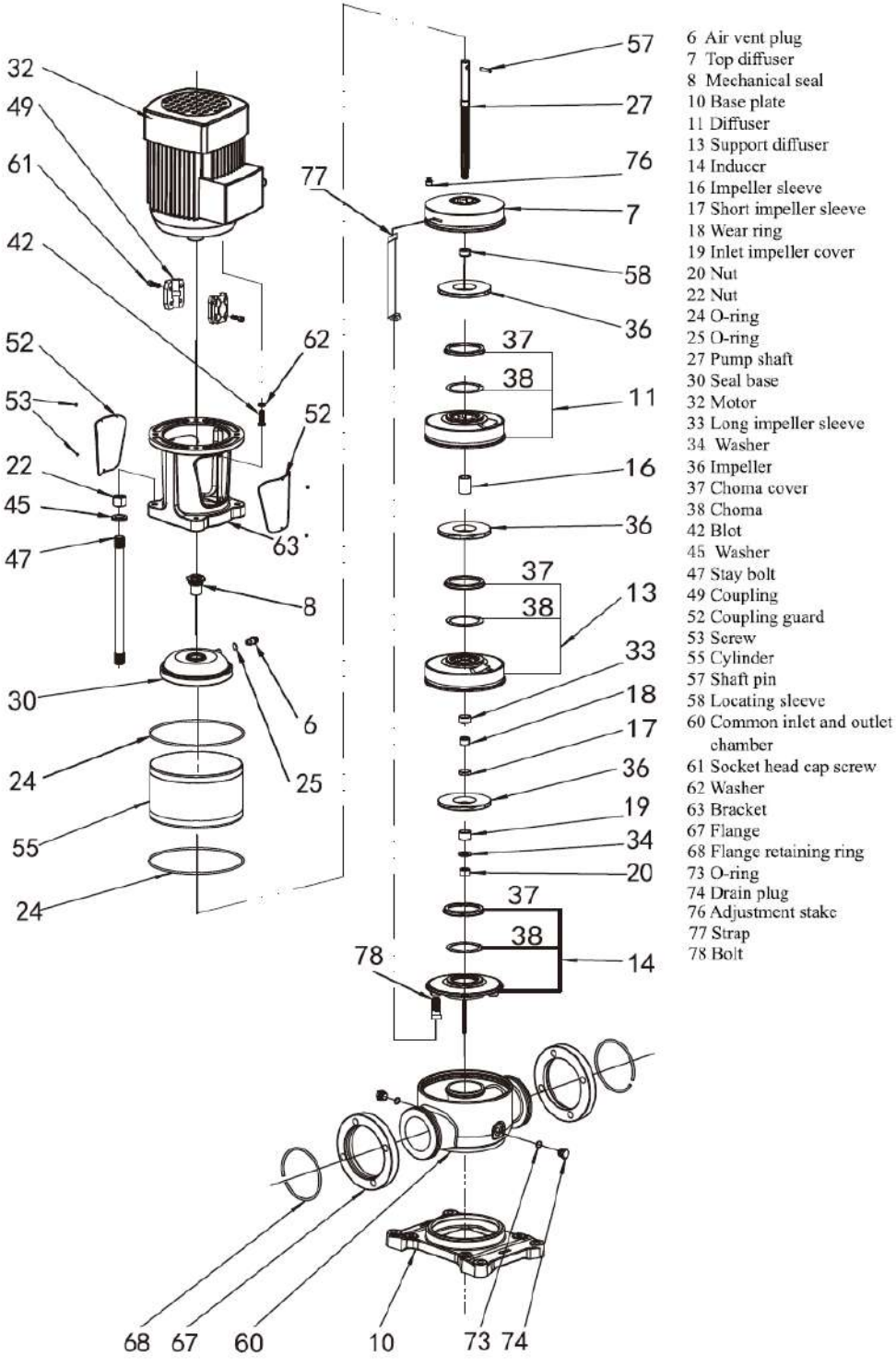
TWIN PUMP CURVE



CUTAWAY AND MATERIALS



1	Motor	/
2	Bracket	Ductile Cast Iron
3	Seal Base	Stainless / Ductile Cast Iron
4	Mechanical Seal	AS-L-16
5	Top Diffuser	Stainless Steel
6	Diffuser	Stainless Steel
7	Support Diffuser	Stainless Steel
8	Coupling	Stainless Steel
9	Impeller	Stainless Steel
10	Cylinder	Stainless Steel
11	Shaft	Stainless Steel
12	Intermediate Bearing	SIC / WC
13	Inducer	Stainless Steel
14	Inlet/Outlet Chamber	Stainless Steel / Ductile Cast Iron
15	Base	Ductile Cast Iron



WARRANTY / CERTIFICATIONS

